

Law Enforcement Torch Run Final Leg & Circle of Honor



Final Leg

Join law enforcement officers as they carry the Flame of Hope during the Final Leg to the Opening Ceremonies of the State Summer Games. **The Final Leg will run about 1 mile from Stockman Bank on 3rd St NW to the Team BBQ at CMR High School in Great Falls.** Please wear your 2019 long-sleeve Guardian Shirt if available. Showers & changing areas will be provided in the locker rooms at CMR.

Law Enforcement Vehicle Display

Bring your law enforcement vehicles to the Opening Ceremonies and proudly display your agency vehicles during the Parade of Athletes at CMR High School. **Park your vehicles in the upper student parking lot on the west side of CMR anytime between 4pm – 6:30pm.**

Circle of Honor

The Circle of Honor is an integral part of the Opening Ceremonies. This is a great representation of law enforcement's dedication and support of Special Olympics Montana athletes. **The Circle of Honor will be in Class A attire; if your Class A requires a hat, please wear. Non-uniformed personnel will be in business suit with pocket badge holder and agency badge. Retired LEO will be in business suit and metal LETR badge will be issued at COH.** During the Circle of Honor, officers will form a circle in the middle of the fieldhouse, serving as Guardians of the Flame. Cascade County Sheriff, Jesse Slaughter and Special Olympics Montana athlete of the year, Jamie Darko will carry the Flame of Hope into the fieldhouse, igniting the cauldron signifying the beginning of the games.

Torch Run Reception

The Torch Run Reception will be held immediately after Opening Ceremonies at the **Dark Horse Hall & Wine Snug at the Celtic Cowboy.** The reception is open to all law enforcement volunteers, family & friends. There will be great food and great door prizes. There is no cost to attend.

SOMT Athlete Medal Presentations

You will have the unique opportunity to observe the smiling faces of our athletes as you present them with their awards! Report to the Awards Captain upon arrival at the Awards Ceremony location. Please wear your duty uniform or agency polo. Please sign up online so we can ensure there is law enforcement at each ceremony.

For more questions, contact Terri at tsappington@somt.org or (406) 315-4210. To register for these events, visit www.somt.org/torch-run.

Year-Round Premier
Law Enforcement Sponsor



Year-Round
Mission Sponsor





Final Leg & Circle of Honor - Schedule of Events

Tuesday, 14 May 2019

5:00pm-6:00pm **Arrival of the Flame of Hope into Great Falls**
Gibson Park – 1st Ave N & Park Dr (no BBQ)

Wednesday, 15 May 2019

All Day **Special Olympics Montana Athlete Medal Presentations** – various locations

4:00pm-7:00pm **Law Enforcement Vehicle Display** – CMR High School upper student parking

5:00pm **Transportation** provided for all Final Leg Runners from the upper student parking lot at CMR High School to Stockman Bank. **Bus leaves at 5pm!**

5:15pm Photos and staging of Final Leg

5:40pm **Final Leg** begins from Stockman Bank on 3rd St NW
Left onto NW Bypass; Right onto 6th St NW; Right onto 16th Ave NW; Into CMR High School parking lot; Right to lower parking lot & Team BBQ

6:00pm **Final Leg arrives at the Team BBQ** – Team BBQ, CMR High School

7:00pm-8:30pm **SOMT State Summer Games Opening Ceremonies**
CMR High School

6:00pm-7:00pm Law Enforcement change into uniforms and begin gathering in the classrooms in the upper-level, south-end in the CMR High School fieldhouse for briefing – locker rooms available at CMR.

7:30pm **Circle of Honor** and lighting of the cauldron

After OC **Law Enforcement Torch Run Reception** – Dark Horse Hall & Wine Snug at the Celtic Cowboy – 116 1st Ave S

Thursday, 16 May 2019

All Day **SOMT Athlete Medal Presentations**

Friday, 17 May 2019

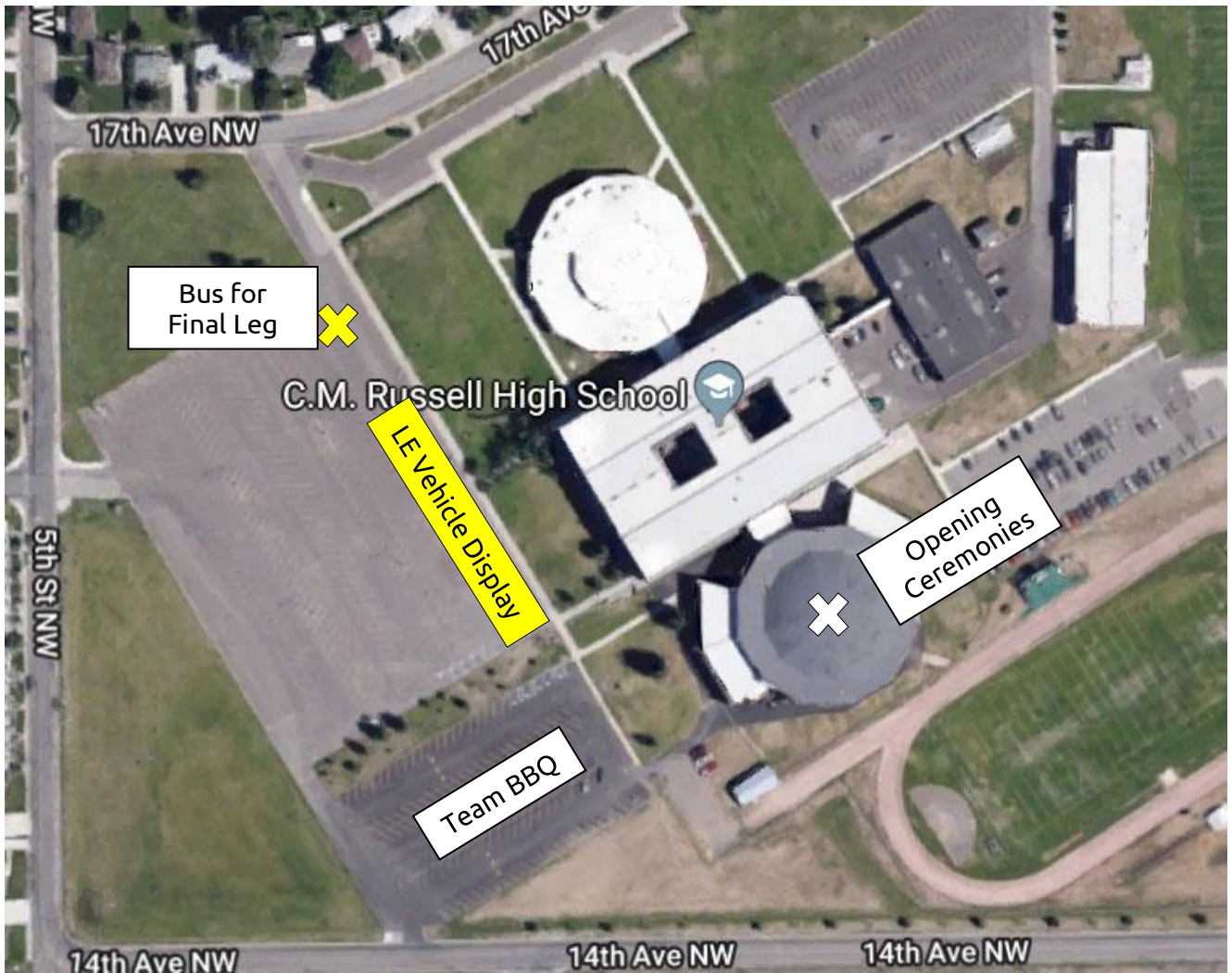
8:00am-9:00am **SOMT State Summer Games Closing Ceremonies**
Great Falls High School - Memorial Stadium

9:30am-3:30pm **SOMT Athlete Medal Presentations**
Great Falls High School - Memorial Stadium

Law Enforcement Vehicle Display

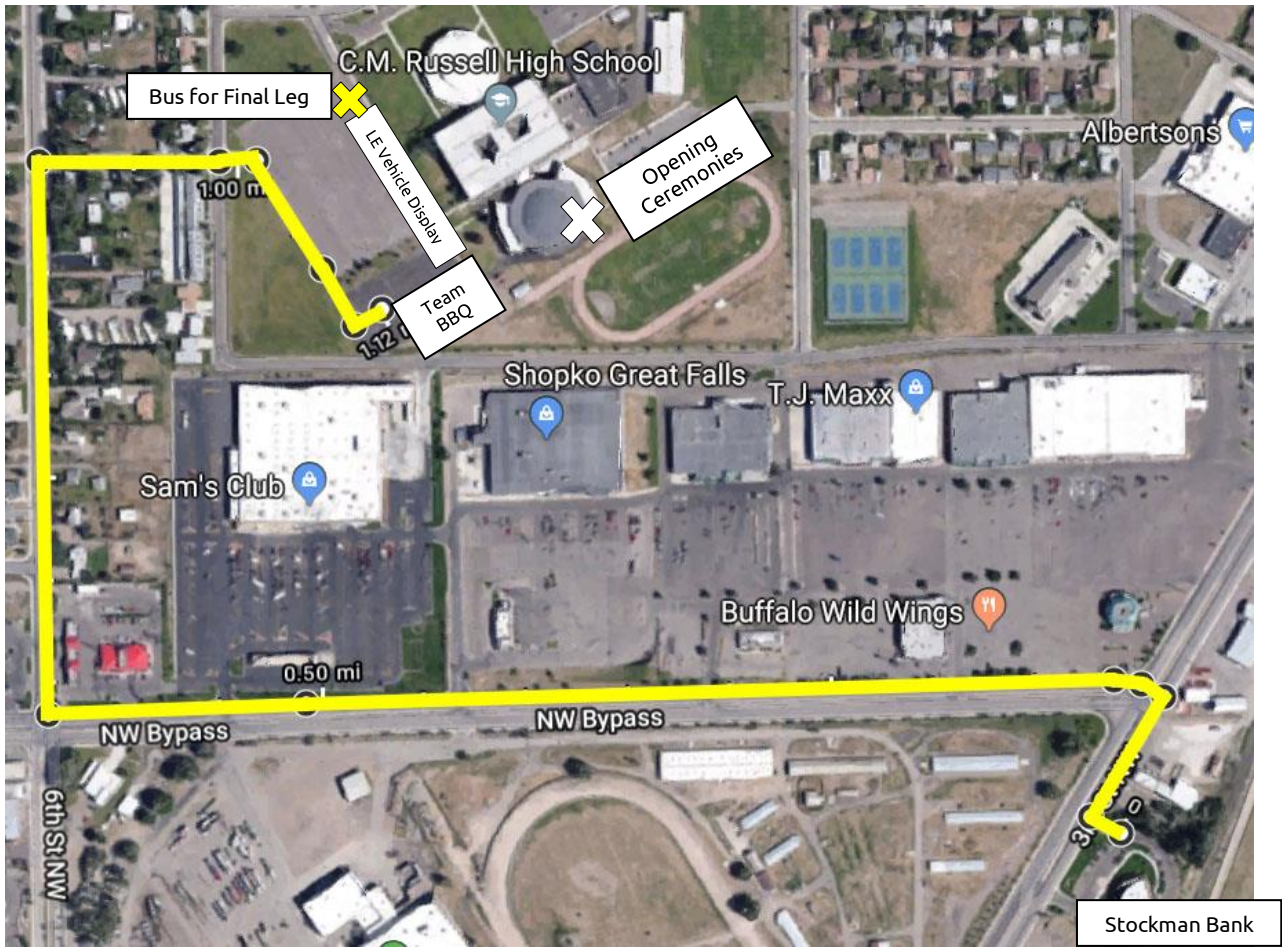
CMR High School - 228 17th Ave NW

Park your vehicles in the upper student parking lot on the west side of CMR anytime between 4pm – 7pm

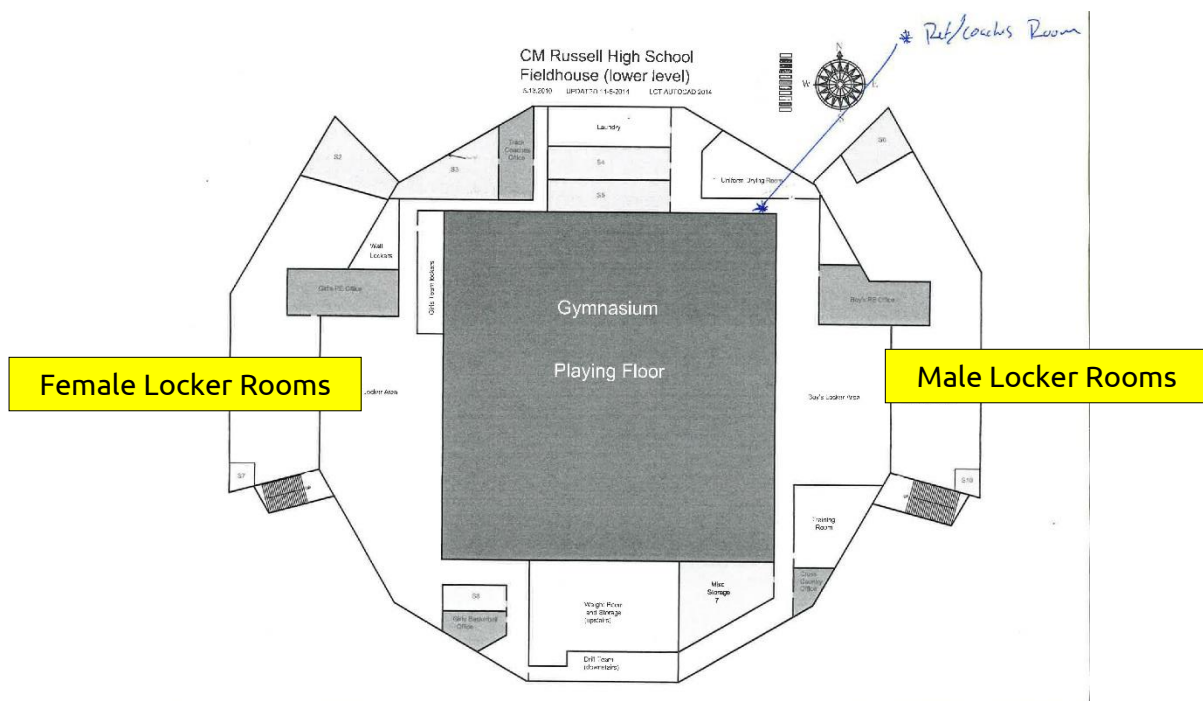


Final Leg

Transportation provided for all Final Leg Runners from the upper student parking lot at CMR to Stockman Bank. Bus leaves at 5pm.



Male & female locker rooms are available in the lower level of the CMR High School Fieldhouse. There are private rooms available on both sides as well.



Circle of Honor

CMR Fieldhouse

Please meet in the LETR briefing rooms anytime between 6pm and 7pm. We will go over the Circle of Honor details. You will be able to watch Opening Ceremony before LETR lights the cauldron. There will be water and very-light appetizers available.

